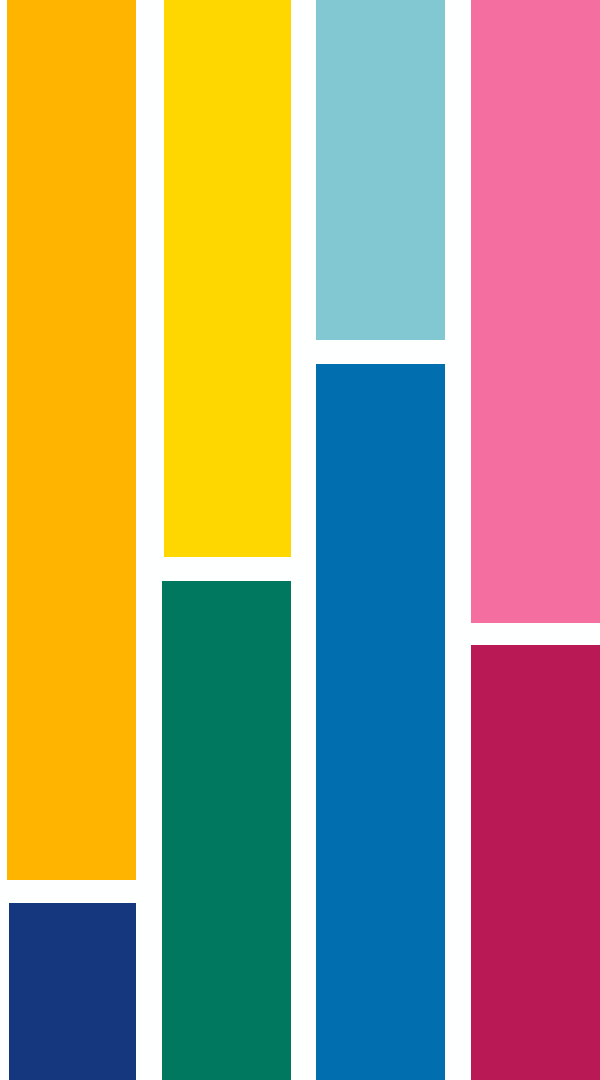




Artists developing social and health sector's structures and services

Kanerva Kartano, community artist, Sointu Senior Services

Pilvi Kuitu, executive director, Culture Centre PiiPoo



Work as the community artist in senior services, Local squares and art and culture networks

- The Sointu senior services hired a community artist for full-time job.
- Sointu provides services under the City of Tampere's purchase service agreement
- Sointu has hired multidisciplinary rehabilitation team, which also includes a community artist



The impacts and results of hiring artist in the senior house

- Art projects and happenings
- Understanding the importance of cultural work
- Community artist facilitates organizational changes



Home through Arts -project



Art Interventions in the personal service and care plan processes

- The project is coordinated by Culture Centre PiiPoo and implemented in Sointu's four service centres in Tampere. PiiPoo is accessible centre for art and culture (local, regional and national)
- Strategic arts based development project in Tampere between Sointu Senior Services and Culture Centre PiiPoo
- The project was planned by PiiPoo's and Sointu's management and community artists together.
- Founded by the national Arts Promotion Centre in Finland, budget of 15.000€

- In this ongoing project two part-time (PiiPoo) and one fulltime (Sointu) community artist develop arts interventions and methodology to be included to the legal bases personal service and care plan process
- Music, fine arts, drama, creative writing
- According to the Finnish law the personal service and care plan has to be done in six weeks when a person moves to a care home.
- Project is based on understanding and experience of how the short time period of the plan process leaves the acknowledgement and the understanding of the person and the real encounters in a thin level
- The artistic interventions aim to support real encounter, individual recognition, humanity based knowledge and the feeling of belonging in the new community.

To be acknowledged as who and how you are

- New information of the customers
- Project moves the focus into the new (art based) possibilities
- Genuine encounters in artistic environment
- Feeling of belonging to the community

Commitment, art professionals and big ears

- Make sure that the management is committed in using art methods and hiring artist, plan well and involve the staff in order to confirm long term results
- Ask, understand and pay committed attention to the needs of the customers
- Work with professionals, have partners and partnerships

Why and how art and artist?

Artist working in the health sector

Arts professionals with a wide knowledge of arts genres and methodological competence guarantee the quality of the services. Artists have the ability to see, hear, identify and understand the wishes, cultural identity and capacity for artistic agency of customers in the health care sector.

Co-operation between the arts and health sector

Co-operation with culture and health care sectors is lethal in-order to develop humanity based social and health care structures.

Shared goals and valuebase in humanity and equality and

By using arts as a part of health care services you get better quality, implement your value base, create communities where people have higher level of wellbeing and more possibilities to live together the way they individually wish.